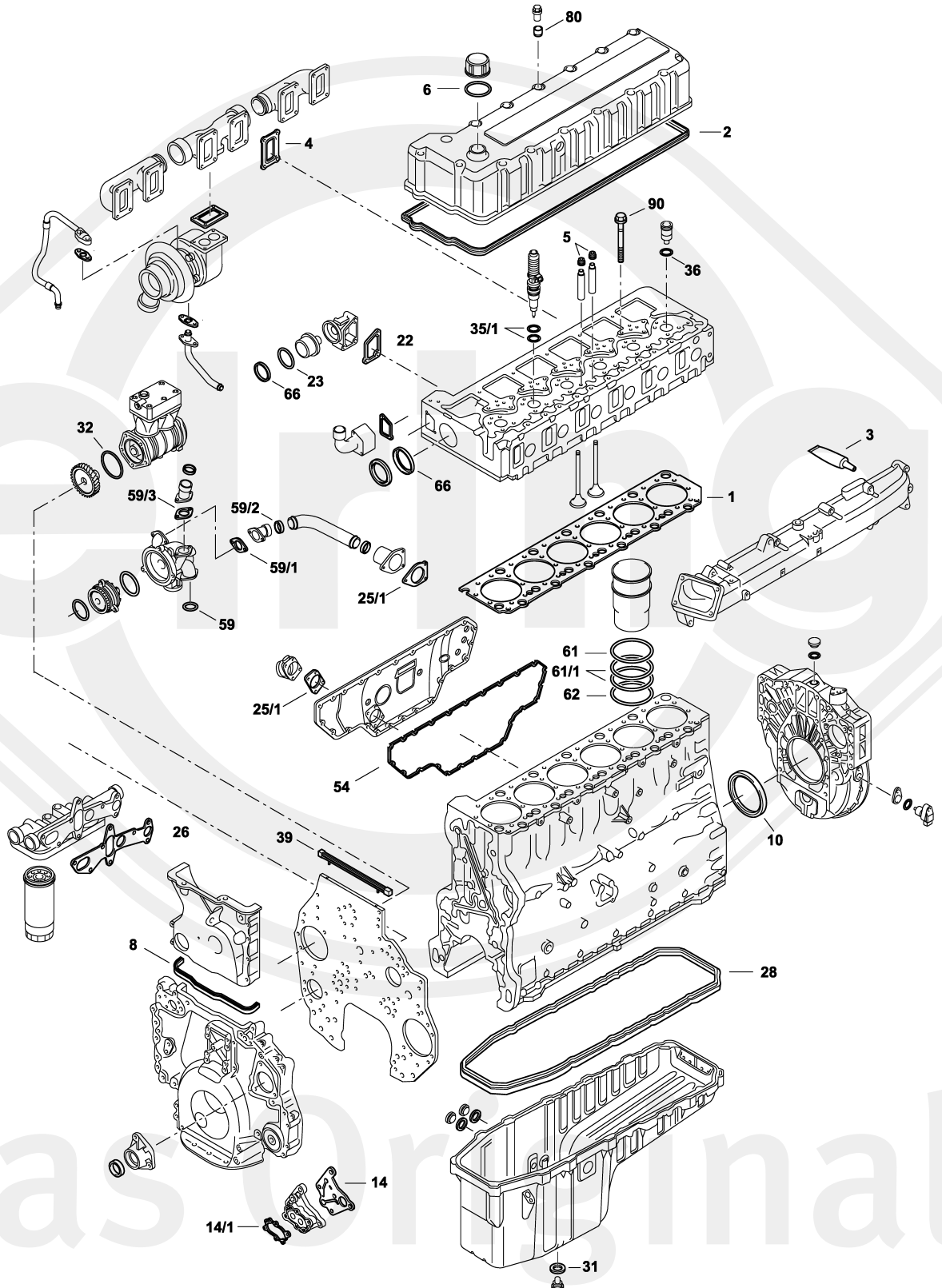




Das Original

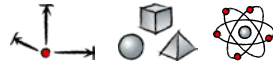
Volvo

D 12 A





D 12 A










S ⊕ *	392.430	1x	-	-	 115.151  390.200
S ⊕ *	138.141	1x	-	-	→  251792  005.101
ES ⊕	390.100	1x	276 875	-	 
ES ⊕	542.391	1x	-	-	 005.101  390.200
CS *	390.110	1x	276 888	-	-
ZKHS	381.390	1x	-	-	-
AAS	390.200	1x	276 930	-	-
TLS	741.930	1x	-	-	-
ZLBS	755.672	6x	270 950	-	-
ZKS	136.680	1x	1 547 419 (38x)	M16x2,0x199	-
1	115.151	1x	3 099 100 20 415 954	∅ 147,3 mm $\frac{\pm}{\mu}$ 1,25 mm	-
1	005.101	1x	3 093 503	∅ 147,3 mm $\frac{\pm}{\mu}$ 1,25 mm	 Steel/Stahldichtung →  251792
2	390.050	1x	1 547 594	-	-
3	610.023	1x	1 161 231	310 ml	 Dirko™ HT 
4	267.560	6x	8 170 959	-	-
5	104.380	24x	21 501 189	8x12/15,4x9,5 FPM	-
6	372.750	1x	1 675 841	43,2x52,2x2,3 NBR A	-
8	390.160	1x	1 677 556	-	→  11420
8	390.290	1x	8 148 490	-	 11421 →
10	081.460	1x	1 543 896	180x205x15 A/BS LD FPM	-
10	453.851	1x	85 108 352	180x205x15 AW LD PTFE/ACM	-
14	896.793	1x	3 964 833	-	-
14/1	390.070	1x	1 547 951	FPM	-
22	257.880	1x	8 170 519	-	-
23	754.854	1x	1 544 710	53,1x67,58x6,35 PTFE	-
25/1	390.360	1x	8 170 515	-	-
26	390.060	1x	1 547 776	-	-
28	390.040	1x	1 547 562	-	-
31	131.156	1x	949 329	24x29x2 CU A	-



D 12 A



32		1x	975 687	-	-
35/1	369.521	6x	276 948	-	-
36	390.490	6x	3 165 747	30x3 VMQ RD	-
39	390.320	1x	8 148 519	-	-
54	355.980	1x	20 712 545	-	-
59		1x	925 255	-	-
59/1	257.830	1x	8 170 514	-	-
59/2	390.030	1x	1 547 254	49x60x7 EPDM A	-
59/3	257.830	1x	8 170 514	-	-
61		6x	470 922	140,5x2,4 EPDM RD	
61/1		12x	470 190	142,6x5,8 FPM RD	
62	813.583	6x	424 833	142,6x5,8 FPM RD	
66	754.854	1x	1 544 710	53,1x67,58x6,35 PTFE	-
80	390.260	16x	3 964 604	-	-
90	136.680	38x	1 547 419	M16x2x199	-