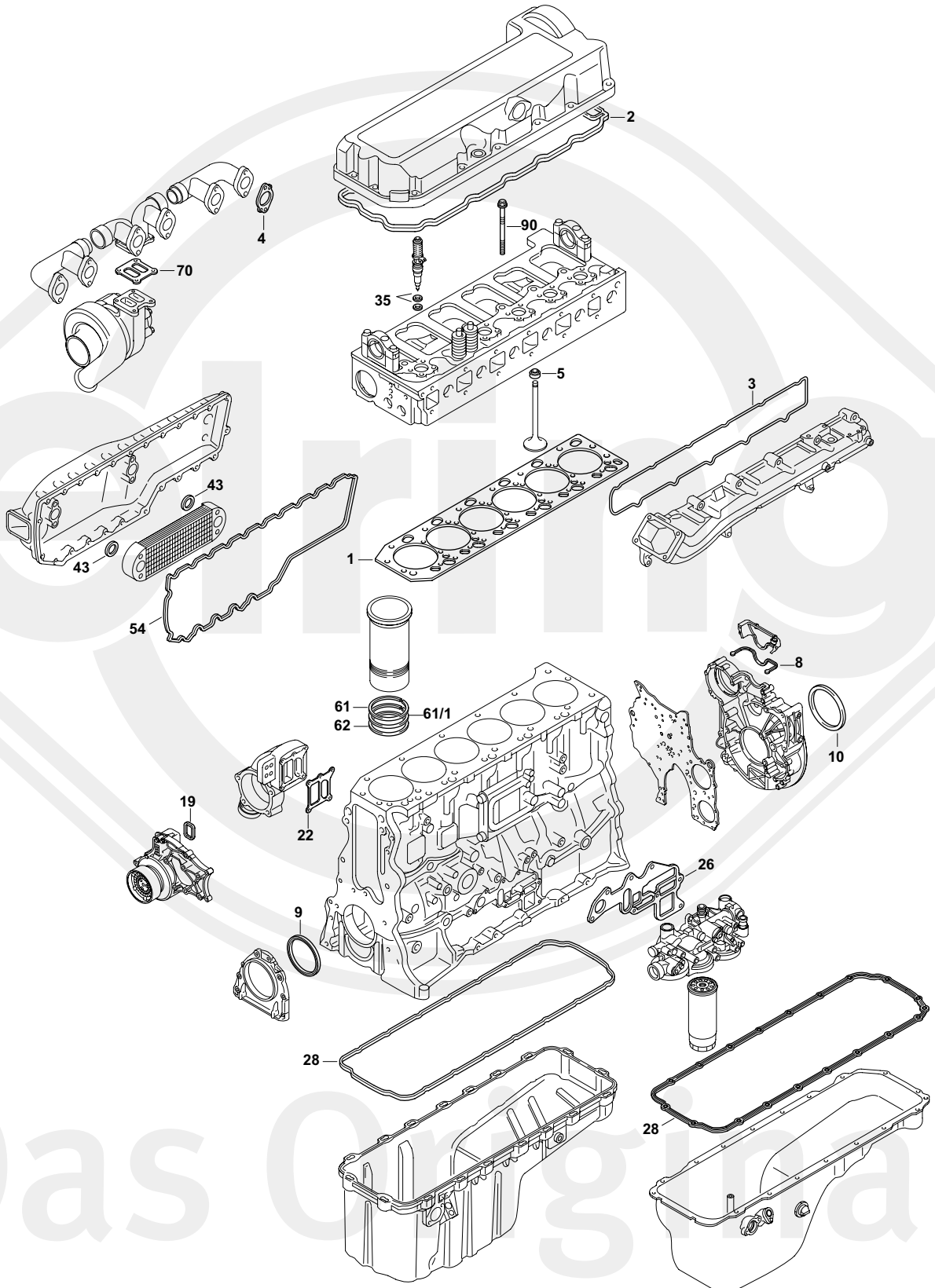




Das Original

Volvo

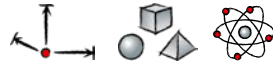
D 11 A/B



Das Original



D 11 A/B



ES ⊕	905.580	1x	21 413 877	–	 PLASTIC
CS	925.350	1x	21 422 745	–	 PLASTIC
CS	925.340	1x	21 422 748	–	 FE
AAS	477.600	1x	85 103 767	–	–
ZLBS	477.610	6x	–	–	–
ZKS	542.360	1x	–	M16x2x199	–
1	225.100	1x	20 495 935	∅ 136 mm $\pm 1,25$ mm	–
2	395.481	1x	20 804 638	–	–
3	746.360	1x	20 850 506	–	–
4	387.992	6x	21 482 601	–	–
5	038.690	24x	21 990 221	8x12/15x9,5 FPM	–
8	321.770	1x	20 817 742	–	–
9	000.270	1x	21 347 087	136x159x13 AW RD PTFE/ACM	–
10	545.800	1x	22 086 413	150x180x15 AW/B LD PTFE/ACM	–
19	545.790	1x	21 415 427	–	–
22	005.860	1x	3 161 465	–	–
26	475.181	1x	21 432 772	–	–
28	377.950	1x	20 812 484	–	 PLASTIC
28	194.612	1x	21 517 690	–	 FE
35	369.521	6x	276 948	–	–
43	390.190	2x	20 551 483	35x4,65 ACM PR	–
54	545.780	1x	20 584 639	–	–
61		6x	422 713	132,5x2,4 EPDM RD	
61/1		12x	8 148 066	128,5x137,3x5 FPM PR	
62		6x	8 148 067	128,3x137,2x5 EPDM PR	
70	409.330	1x	20 781 146	–	–
90	542.360	1x	21 345 131	M16x2x199	–